

LLOYDS BANKING GROUP OUR PARTNERSHIP IMPACT



A BIG THANK YOU TO LLOYDS BANKING GROUP!

In January 2020 the Woodland Trust and Lloyds Banking Group embarked on a transformational 10-year partnership: together we have committed to plant 10 million native trees by 2030. These trees will help to reduce the impact of climate change, potentially absorbing 2.5 million tonnes of carbon dioxide.

The Woodland Trust's conservation activities focus on the protection, creation, restoration and management of native woodlands and trees in the context of the wider landscape – both rural and urban. We seek to achieve a larger network of woods and trees that are bigger, better and more joined up.

By working in partnership with Lloyds Banking Group, we're able to collaborate with landowners and communities to develop diverse, wildlife-rich and resilient landscapes that engage and benefit people and nature. We work together through three main tree planting delivery strands: [Free Trees](#), [MOREwoods and MOREhedges](#), and [LBG Woods within Woods](#).

OUR PARTNERSHIP IS OFF TO A FLYING START, WITH FOUR MILLION TREES PLANTED IN THE FIRST FOUR YEARS.



This is a huge achievement and a significant milestone in our journey together.”

Karl Mitchell,
Director of fundraising,
Woodland Trust.

REASONS TO BE PROUD:



**PLANTED TREES
IN FIVE NEW
LBG WOODS**



**PLANTED ENOUGH
HEDGES TO LINE
A ROAD FROM
BIRMINGHAM TO
MANCHESTER**



**PLANTED ENOUGH
NEW WOODLAND
TO COVER HYDE
PARK THREE
TIMES OVER**



**ENGAGED, ENTHUSED
AND EDUCATED
THOUSANDS OF
LLOYDS BANKING
GROUP COLLEAGUES**

HERE'S WHAT WE'VE ACHIEVED IN THE LAST YEAR

JUMP TO A PAGE TO FIND OUT MORE

4 CONTINUED OUR MISSION TO DECARBONISE AGRICULTURE

We planted one million more trees, meaning we're well on our way to our target of planting 10 million native trees over 10 years.

5 We planted just over 119,000 metres of hedgerow and supported the planting of almost 400 hectares of new woodland. Connecting habitats in this way creates resilient landscapes for nature.

6 INSPIRED THE NEXT GENERATION OF CONSERVATIONISTS

We provided 100,000 free trees for schools and communities. Getting out into nature's classroom teaches the importance of woods and trees, and connects young people with their local environment.

7 CREATED A LEGACY FOR THE FUTURE

We planted 18,000 trees in our Woods within Woods. Expanding woodland habitats bolsters biodiversity and acts as a buffer for nature.

8 DEDICATED MORE THAN 37,500 HOURS OF VOLUNTEERING

A great way to engage and inspire Lloyds Banking Group colleagues in the many benefits of woods and trees. Getting out into nature and growing relationships with colleagues benefits wellbeing.

9 PROTECTED LIVING LEGENDS

Added 99 new trees to the Ancient Tree Inventory. Ancient trees are lifelines of biodiversity and hold cultural significance.

10 ENGAGED LLOYDS BANKING GROUP COLLEAGUES

through channels including blogs and vlogs, showcasing our work. This helps Lloyds Banking Group colleagues to understand and appreciate the good work that the Woodland Trust does.

11 HIGHLIGHTED THE IMPORTANCE OF ACCESSIBILITY IN WOODS

with members of Access, Lloyds Banking Group's Disability Network. Through bringing colleagues together, we're able to listen to and learn from each other, which helps the Woodland Trust improve site access and encourages Lloyds Banking Group colleagues with disabilities to access woodlands for their wellbeing.

THIS IS ALL PART OF OUR COMMITMENT TO REDUCE THE IMPACT OF CLIMATE CHANGE WHILE MAKING SURE WE HAVE A WORLD WHERE WOODS AND TREES THRIVE FOR PEOPLE AND NATURE.

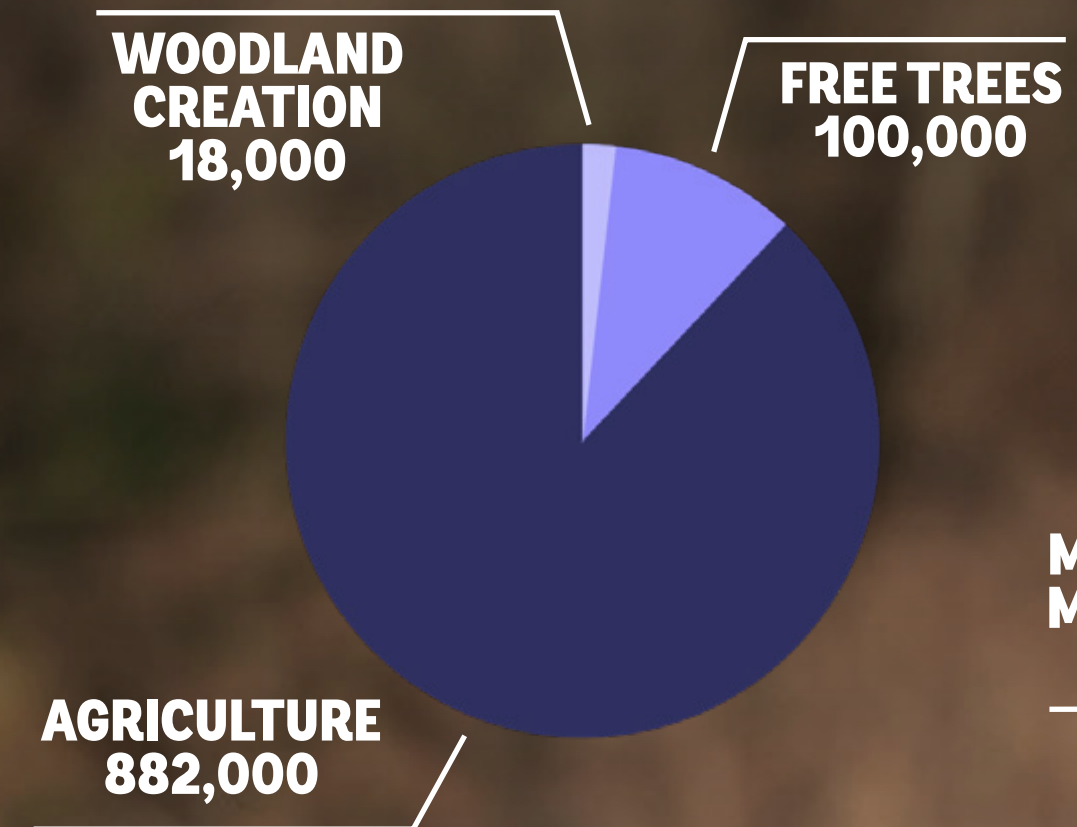


HOW DID WE GET THERE IN 2023?

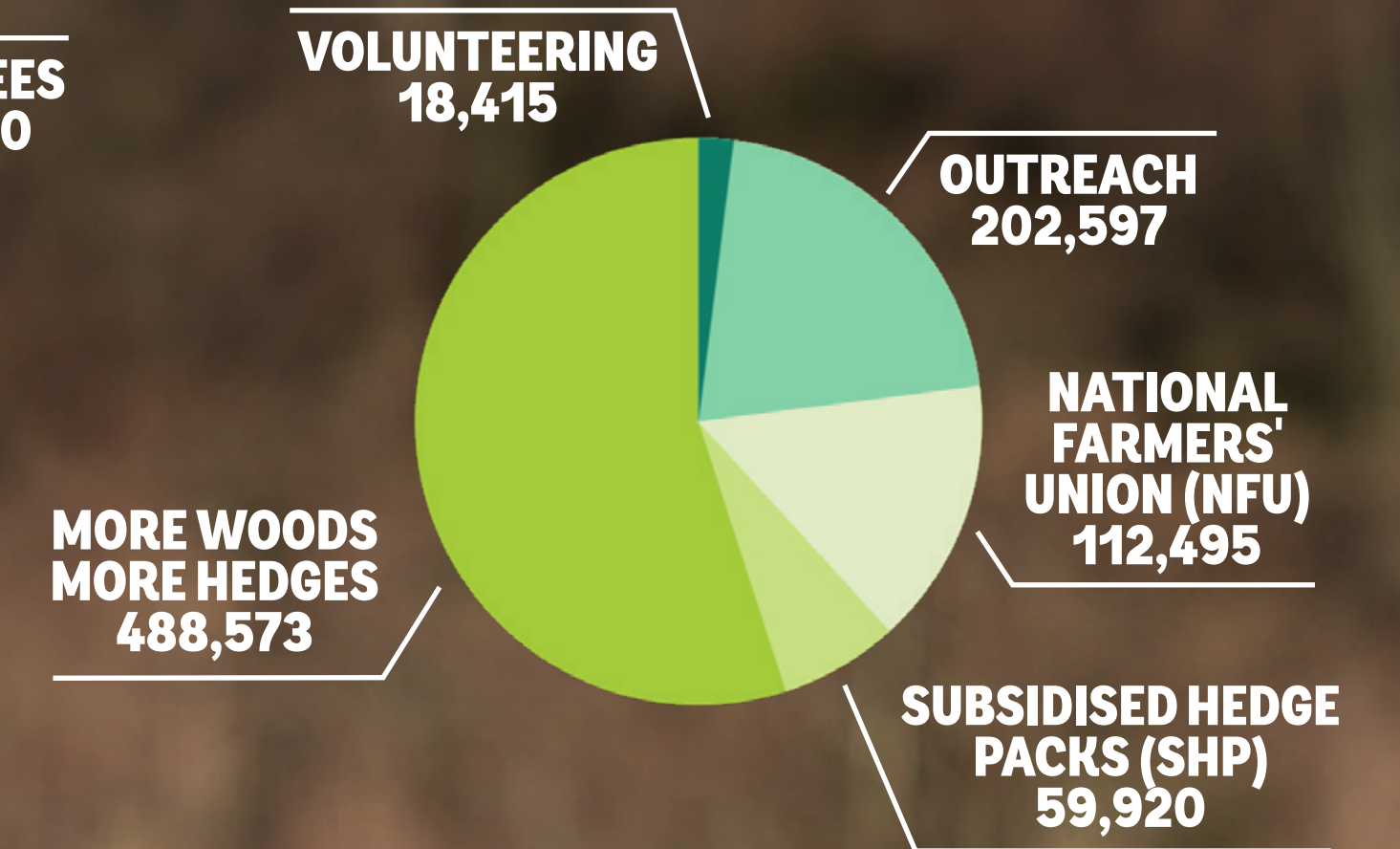
Each year we have met our ambitious target of seeing one million more trees in the ground. A significant proportion of the trees planted in 2023, as in other years, have contributed to agricultural projects. Planted on 851 agricultural sites across the UK, these 882,000-strong UK native trees have the collective potential to **sequester** as much as 220,500 tonnes of carbon over the course of the next 100 years.*

100,000 FREE TREES FOR SCHOOLS AND COMMUNITIES

ONE MILLION TREES IN 2023



AGRICULTURE



*Planting density of 1,200 stems per hectare x 300 tonnes CO2e per hectare, calculated across all planting schemes for agriculture.

**% by funding allocation to Lloyds Banking Group.

*** Planting density of 1,200 stems per hectare x 300 tonnes CO2e per hectare.

MOREWOODS AND MOREHEDGES

Lloyds Banking Group supports our MOREwoods and MOREhedges schemes to provide the trees, funding and expert advice that landowners need to achieve their goals.

Designed to create new ecological links with woodland in the surrounding landscape, MOREhedges is available to landowners that commit to planting at least 100m of hedging to accompany existing woodland. Those that can make this commitment can apply to be reimbursed for up to 75% of the cost. The MOREwoods scheme is open to anyone looking to plant at least 500 trees on at least half a hectare.

CASE STUDY: BANK OF SCOTLAND CUSTOMER, CHRIS ADDISON-SCOTT, SCOTLAND*

We've already helped more than 3,000 landowners with their planting projects, including Chris Addison-Scott, who recently received subsidised trees through the Woodland Trust's MOREwoods scheme to support the transformation of a parcel of arable land on his Fife estate.



In 2023 we planted **119,030 METRES OF HEDGEROW**. That's almost as far as Birmingham to Manchester!



We also supported the planting of **396.82ha OF NEW WOODLAND**. That's almost three times the size of Hyde Park in London!



It really has worked for us, and I would definitely recommend it as a way to increase nature on your land."

Chris Addison-Scott,
Farmer,
Scotland.

FREE TREES – TREE PACK

CASE STUDY: EASTWOOD, NOTTINGHAM

We make two free tree pack deliveries a year, in March and November. Recently, we joined two schools in Nottingham, both under The White Hills Park Trust, to plant their free trees. We delivered 105 saplings to Springbank Academy, and a further 105 saplings to Florence Nightingale Academy.

It was heartening to see primary school students of all ages participate enthusiastically in the tree planting event. Teachers played a pivotal role, actively engaging and educating students about the trees' growth, ideal planting conditions and necessary care. This planting effort demonstrates the importance of environmental education and hands-on learning in nurturing a passion and compassion for the outdoors and nature in the next generation.



“Learning outdoors has been defined as an inspirational process that offers children, young people and adults regular opportunities to achieve and develop confidence through hands-on learning in a woodland environment. We need access to those spaces in order to achieve this beneficial educational model.”

Teacher, Florence Nightingale Academy, Eastwood, Nottingham

“The school community watches the trees grow over time. Some of the school's previous Woodland Trust trees are now very established, possibly four years old now. We would always plant more trees.”

Mrs Sainsbury, Florence Nightingale Academy, Eastwood, Nottingham



THE PRESENCE OF TREES POSITIVELY INFLUENCES THE WELLBEING OF STUDENTS AND STAFF, AND THIS IS WHY THEY PLAN TO PLANT EVEN MORE TREES AS PART OF OUTDOOR LEARNING EVENTS IN FUTURE.

LBG WOODS WITHIN WOODS

Lloyds Banking Group has committed to create 10 new native woods within woods at sites across the UK. Planting new alongside old enables us to maximise the potential impact and benefits for nature. LBG Woods within Woods provide protection for existing woodland habitats by acting as a buffer, making them more resilient. As the new woods become established, they allow the existing flora and fauna to expand, strengthening the local biodiversity.

The locations of the woods have been carefully considered, both for nature and for people. Situated near communities, the woods invite local Lloyds Banking Group colleagues to deepen their personal connection with the landscape on their doorstep. In 2023, four planting events were held at LBG Woods, with 66 colleagues taking part.

Not only are we creating woods and supporting nature regeneration, we are creating a legacy that Lloyds Banking Group colleagues can be proud of, laying down roots beyond the lifetime of the partnership itself.

At the time of publication, eight woods have been secured, with Lloyds Banking Group colleagues on site at six, and trees planted at five.

SIX WOODS ANNOUNCED, AND COUNTING...



IN 2023 WE SUCCEEDED IN PLANTING 11,000 TREES AT YONDER OAK WOOD AND A FURTHER 7,000 AT HEARTWOOD FOREST.

CASE STUDY: BUTTERDEAN, EAST LoTHIAN.

A charming and rare remnant of plantation woodland being restored to native woodland. A precious place for native trees to thrive in an otherwise agricultural landscape.

Size: 42.15ha (104.15 acres)

What3words: ///selects.sideboard.saved

[SEE IMAGES](#)

COLLEAGUE ENGAGEMENT AND VOLUNTEERING

Vital to the success of our partnership is the ability to engage, educate and inspire colleagues within Lloyds Banking Group about the important role woods and trees play in our response to climate change, but also the wider benefits they can have for people, nature and the planet.

Together, we have developed a programme of engagement and volunteering activities for Lloyds Banking Group's colleagues to participate in. While the Woodland Trust has supplied trees for other Lloyds Banking Group volunteering events, throughout 2023, 290 colleagues were engaged across 27 volunteering events specifically led by the Woodland Trust.

Tree planting events took place at sites the length and breadth of the UK, from Devon to Edinburgh and Cardiff to Essex, and included Yonder Oak Wood and Heartwood Forest – two of Lloyds Banking Group's Woods within Woods.

Non-tree planting activities included tree guard removal, tree maintenance, invasive species removal such as ragwort pulling, and recording data for the Ancient Tree Inventory. These critical interventions support our conservation efforts, ensuring that our existing woodlands are protected and able to thrive.

STRENGTH IN NUMBERS



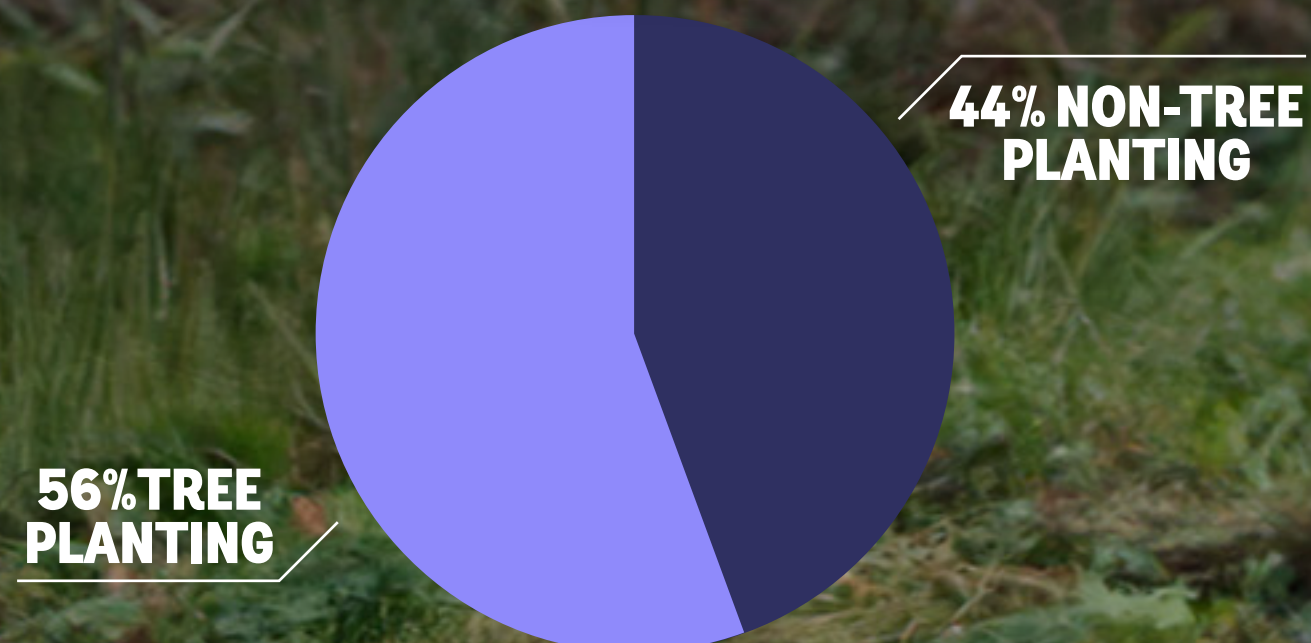
Lloyds Banking Group colleagues dedicated a collective

37,555 HOURS

to volunteering with the Woodland Trust in 2023 alone. That would take a single person over four years, and that's without rest or sleep!

**LLOYDS BANKING GROUP COLLEAGUES
TREE PLANTING EVENT, LIVERPOOL**

VOLUNTEERING ACTIVITIES VARY WITH THE SEASONS.



CASE STUDY: ANCIENT TREE INVENTORY (ATI) PILOT

The Ancient Tree Inventory is a citizen science project led by the Woodland Trust. Volunteers locate and verify ancient, veteran and other notable trees and upload this information onto our large-scale living database.

While much of our partnership is focused on the creation of new woodlands, we were conscious of not overlooking the importance of already established trees. We came into the partnership with a focus on the potential carbon sequestration from planting 10 million trees, but through the ATI, we see an example in which the partnership opens up discussion around the importance of existing woods and trees and the vital role they play in our response to climate change, biodiversity and nature recovery.

By incorporating Ancient Tree Inventory workshops into the Lloyds Banking Group colleague volunteering offer, we have an opportunity to educate, develop new skills, and foster a sense of community pride and connection to nature.

Following a demonstration, working in small groups, the Lloyds Banking Group volunteers were invited to explore the site to engage in identification independently. Workshop leaders moved between groups to give support where required.

ANCIENT TREE INVENTORY PACK

- How to guide
- ATI booklet
- Fungi ID sheet
- Leaf swatch book
- Tape measure
- Tree recording form
- ATI field data sheet

A total of 11 events took place during the spring and summer months, which helped make the best use of time outside of the tree-planting season.

Lloyds Banking Group colleagues updated 55 records and uploaded 99 new trees onto the database.

"I note you have updated some of the early submissions and this is extremely useful to us as we can see how trees are developing over time."

Alan Hunt,
Lead volunteer verifier, Woodland Trust.

A total of 77 Lloyds Banking Group colleagues were engaged through the pilot. This was a fantastic result and supports our learning that the non-tree planting activity provided a more accessible and inclusive option for colleagues who find tree planting challenging. It also extends the option to volunteer beyond tree planting season.

"We had a great day; it was a beautiful setting and lovely to do some volunteering that was less physically intensive than the tasks we normally undertake. I've found myself looking at trees differently since, and I'm idling sourcing a tape measure to take out on walks so I can contribute to the ATI inventory!"

Lloyds Banking Group colleague,
ATI workshop, Scone Palace.



ENGAGING LLOYDS BANKING GROUP COLLEAGUES

There are many channels through which Lloyds Banking Group colleagues can engage with the partnership, leaning into different areas of interest and learning and communication styles. We talk to more than 1,000 colleagues through Viva Engage and connect at a senior level through partnership messages via LinkedIn.

IN 2023 WE...

PUBLISHED
FIVE BLOGS
THROUGH
WOODLAND WORDS

HOSTED
THREE
TREE60 SESSIONS

PRODUCED
SEVEN VLOGS
ON WOODLAND
WATCH

LAUNCHED A
360
SHAREPOINT HUB
- AN LBG FIRST!

The LBG Woods within Woods may be young, but set against the backdrop of mature woodland they are anchored in a sense of place within the wider landscape. Lloyds Banking Group colleagues local to these areas will instantly recognise their own hillsides, coastlines and communities.

By enabling Lloyds Banking Group colleagues to explore the woods digitally, the hub serves to increase awareness of and engagement with the partnership and encourage colleagues to visit their local woodlands and participate in volunteering opportunities.

DISABILITY ENGAGEMENT FILM

We engaged members of Access – Lloyds Banking Group's Disability Network – and invited them to share their experiences with physical and neurodiverse disabilities and getting out into nature.

We often talk about the benefits of being in woodland and nature, but wanted to acknowledge that this isn't so easy for everyone. By hearing from Lloyds Banking Group colleagues about those difficulties, but why ultimately it was worth it, we would learn from each other's experiences. It was important to all stakeholders that the film was a vehicle for authentic storytelling and was informed by the disability group members.

In September 2023 we filmed on site at Londonthorpe Wood, Grantham. The location has good rail links and the woodland itself has been improved with level pathways. The day of filming brought together colleagues from across a broad range of teams and levels within both Lloyds Banking Group and the Woodland Trust. The project facilitated discussion and was an unparalleled opportunity to share, listen and learn together.



A behind the scenes shot from the day of filming.

BRANCHING OUT FROM HERE

We have come a long way together and the partnership between Lloyds Banking Group and the Woodland Trust is already making a big impact in the here and now, while also laying down the roots of a future legacy.

It is clear that the partnership encompasses much more beyond the planting of new trees. While 10 million trees in 10 years will always be our driving goal, we're proud to be branching off into other areas to meet the needs of Lloyds Banking Group's business, and where possible their client base, while benefiting people and planet.

Through engagement with Lloyds Banking Group colleagues, we have not only been able to nurture new trees but also instil an appreciation for, and connection with, our established woods and living legends. We've also identified opportunities to link to Lloyds Banking Group's approach to nature, supporting their colleagues' understanding of the link between woods and biodiversity.

And beyond this, we have built a growing community within Lloyds Banking Group around the partnership.

Behind the scenes, we are also striving to support Lloyds Banking Group agriculture customers on their journey to net zero. Through Lloyds Banking Group's partnership with the Soil Association, we are working with Lloyds Banking Group's commercial business by supporting their Relationship Managers through site visits and other learning opportunities to understand the business case for planting trees.

We are now in our fifth year and proud of all we have achieved, and are on track to deliver on the partnership, but there is still much more to do. We need to keep the momentum going, to sequester more carbon, expand and create more spaces for nature and nurture what we already have to enable biodiversity to thrive.



Lloyds Banking Group is immensely proud of our partnership with the Woodland Trust.

At Lloyds Banking Group we realise that, as the UK's largest financial provider, we have a responsibility to be a leader on sustainability, and that businesses can't thrive without a healthy natural environment. In the years ahead, we'll continue in our support of the Woodland Trust, making sure that we continue to positively impact our colleagues, customers and the communities we serve."



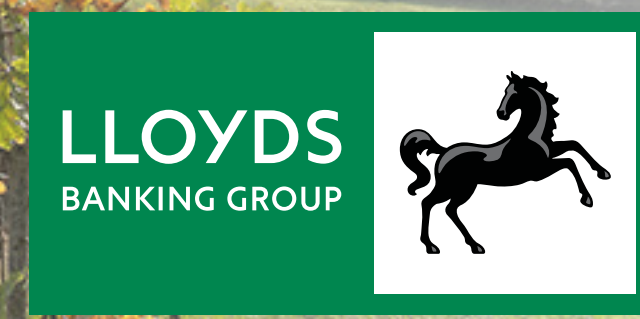
Andrew Walton,
Chief Sustainability Officer
& Chief Corporate Affairs Officer,
Lloyds Banking Group



In our fifth year working in partnership with Lloyds Banking Group, it is vital that we continue to act – to build momentum - fighting for the health of people and the planet with every tree. I am inspired to see how much has been achieved so far and feel strongly that together, we will make a real difference."



Darren Moorcroft,
CEO,
Woodland Trust.



The Woodland Trust, Kempton Way, Grantham, Lincolnshire NG31 6LL.
The Woodland Trust is a charity registered in England and Wales no. 294344 and in Scotland no. SC038885.
A non-profit-making company limited by guarantee. Registered in England no. 1982873. The Woodland Trust logo is a registered trademark. Map © Crown Copyright 2023. All rights reserved. Ordnance Survey Licence number 100021607.
CP01522 04/24